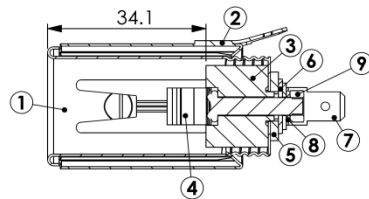
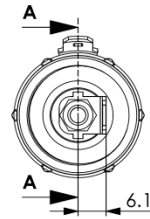
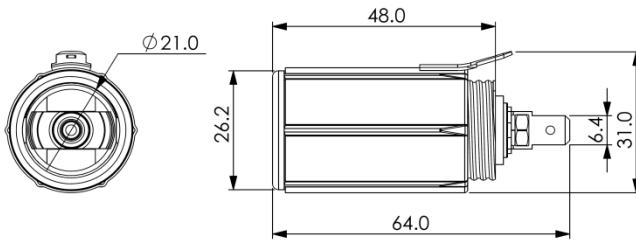


YE-2113C2 AUTO CIG SOCKET

• **MATERIALS :**
AS SHOWN ON THE
DRAWING



| 9 | Hexscrew Nut | Steel | Znic Ptd. | 1 |
|-----|---------------------|------------|-------------|------|
| 8 | Screw Washer | Steel | Nickel Ptd. | 1 |
| 7 | Positive Terminal | Steel | Nickel Ptd. | 1 |
| 6 | Washer | Steel | Nickel Ptd. | 1 |
| 5 | Bakelite Insulation | Bakelite | | 1 |
| 4 | Positive Spring | FeNi Alloy | | 1 |
| 3 | Insulation | Ceramic | | 1 |
| 2 | Shield Cover | Steel | Nickel Ptd. | 1 |
| 1 | YE-2113 Shell Body | Steel | Nickel Ptd. | 1 |
| No. | Description | Material | Treat | Q'ty |

俞昌有限公司
YEU TSANG CO. LTD.

品名:
ITEM : **AUTO-CIG SOCKET**

料號:
PART NO: YE-2113C2

圖號:
DRW NO.



一般公差
.X +/-0.25
.XX +/-0.10

SHEET:
1
1

單位:
unit: mm

比例:
scale: 1:1

日期:
date: '07/01/23

版本:
version: V. 1.0

繪圖:
drwn by: DanielShyr

核准:
aprvid by: SkyShyr